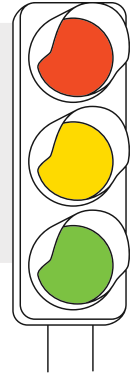


Yuflyma[®] dose instructions:

As you prepare for your upcoming doses of Yuflyma[®], make sure you are **SET** for success. If you answer **NO** to all of these questions, you are good to go!

If your answer to any of these questions is **YES**, check with your doctor before your shot.

- S** > Are you scheduled for any other **SHOTS** or vaccines?
- E** > Are you planning any medical **EXAMS** or procedures?
- T** > Are you being **TREATED** for any illness or infection?



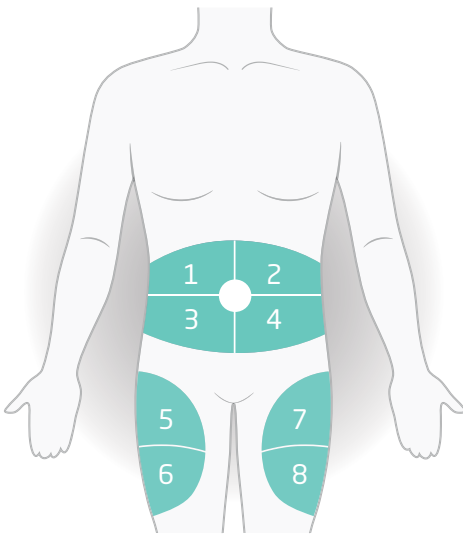
Next, plan a **day of the week** that is the best for your shot(s). For example, if you are to take your shot every 2 weeks, plan for every other Friday as your day.

Use these injection sites for your tracking:

- the front of your thighs.
 - your abdomen except for the 2 in (5 cm) around the belly button (navel).
- Do not** inject into skin that is within 2 in (5 cm) of your belly button (navel), or is red, hard, tender, damaged, bruised, or scarred.
- If you have psoriasis, **do not** inject directly into any raised, thick, red, or scaly skin patches or lesions on your skin.
- Do not** inject through your clothes.

Rotate the injection site each time you give an injection.

- Do not** inject the same injection site each time you give an injection.
- Each new injection site should be at least 1.2 in (3 cm) away from the injection site you used before.



Yuflyma[®] Dose and Site Tracker With Refill Reminder*

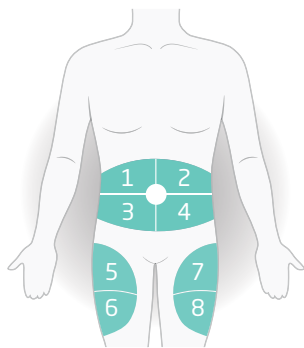
Schedule	Date	Injection Site	Dose	Refills
Loading	8/5/2023	1	40 mg auto-injector	Refill due
Loading	8/5/2023	6	40 mg auto-injector	
Loading	8/5/2023	2	40 mg auto-injector	
Loading	8/5/2023	7	40 mg auto-injector	Refill due
Loading	8/19/2023	4	40 mg auto-injector	
Loading	8/19/2023	5	40 mg auto-injector	
Maintenance	9/2/2023	3	40 mg auto-injector	
Maintenance	9/16/2023	8	40 mg auto-injector	Refill due

*Follow dosing instructions as prescribed by your healthcare provider.

[For more information, see Full Prescribing Information, including Boxed Warning](#)

BRING THIS FORM TO YOUR NEXT DOCTOR'S VISIT.

Yuflyma[®] dose instructions:



Each time as you prepare for your upcoming doses of Yuflyma[®], make sure you are SET for success.

- S** > Are you scheduled for any other SHOTS or vaccines?
- E** > Are you planning any medical EXAMS or procedures?
- T** > Are you being TREATED for any illness or infection?

Yuflyma[®] Dose and Site Tracker With Refill Reminder*

Schedule	Date	Injection Site	Dose	Refills

For more information, see Full Prescribing Information, including Boxed Warning



Download additional injection tracking sheets at www.CelltrionConnect.com



*Follow dosing instructions as prescribed by your healthcare provider.